

2016 Hop Showcase and Evaluation

Presented by Steve Miller

Aroma Varieties Submitted for Sampling

Cascade

Cluster

Columbus

Crystal

Fuggle

Glacier

Hallertau

Liberty

Mt. Hood

Perle

Saaz

Sterling

Yakima Gold

Willamette

Bittering Varieties Submitted for Sampling

Brewer's Gold

Centennial

Chinook

Galena

Horizon

Magnum

Newport

Northern Brewer

Nugget

Other Varieties Submitted for Sampling

Alpharoma

Prohibition

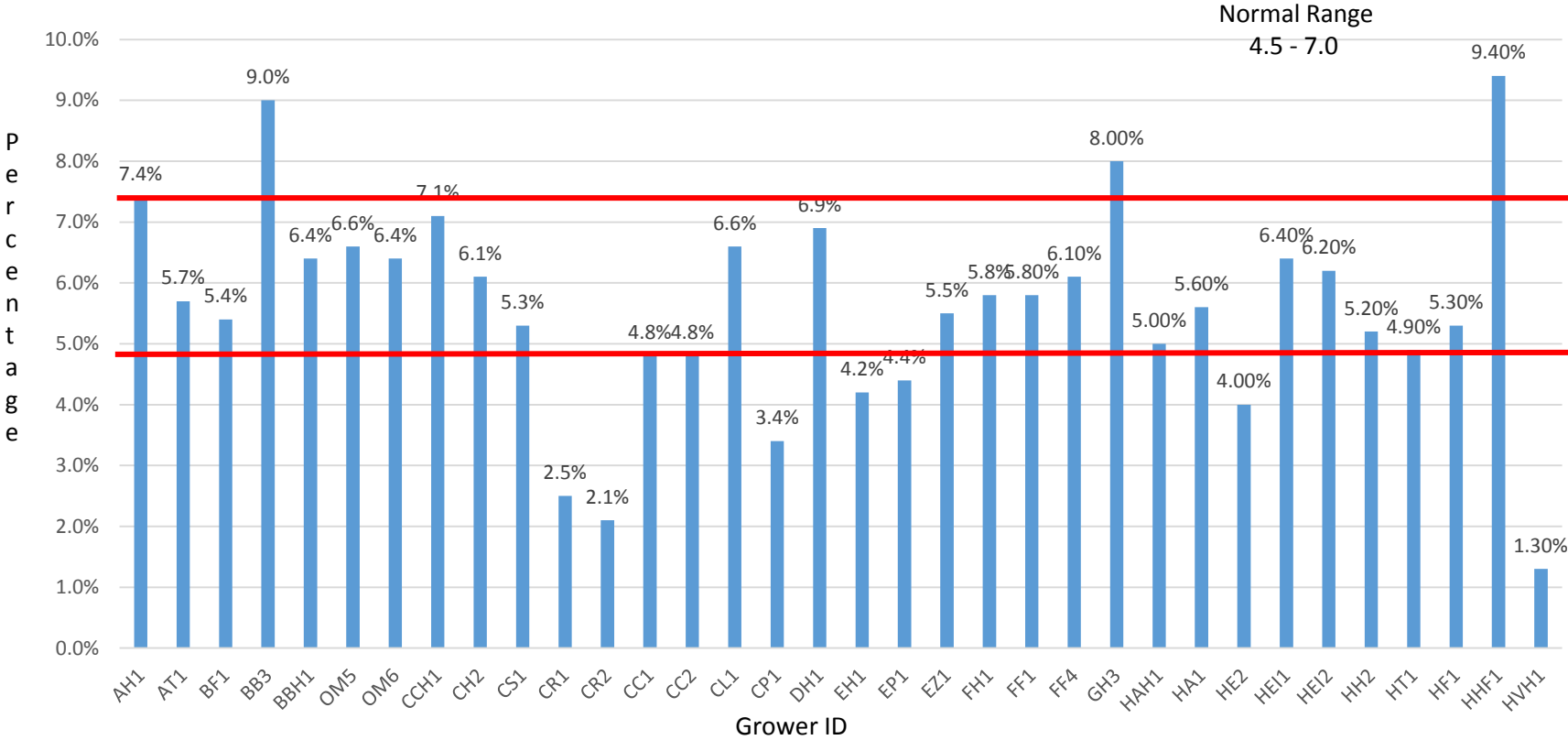
Rakau

Tahoma

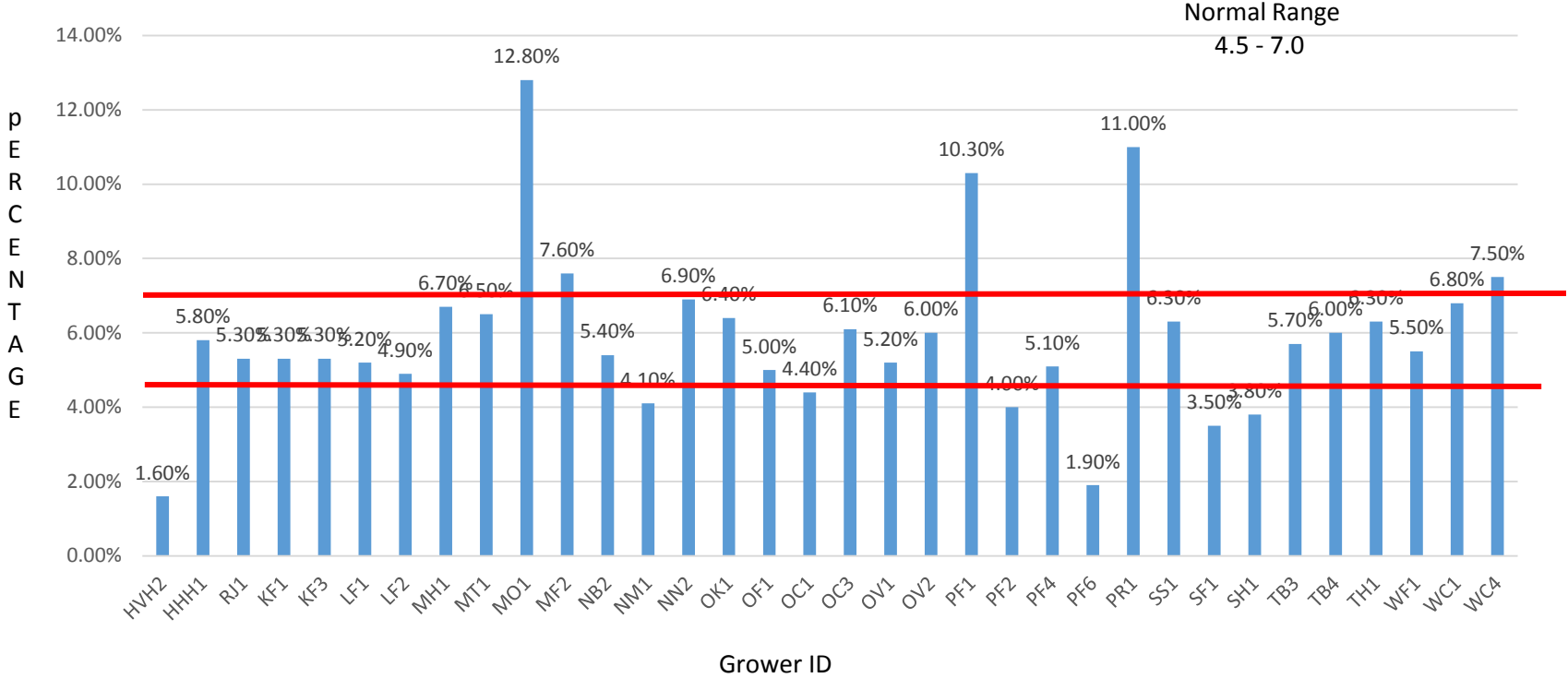
Ultra

Zeus

Cascade Alpha Acids

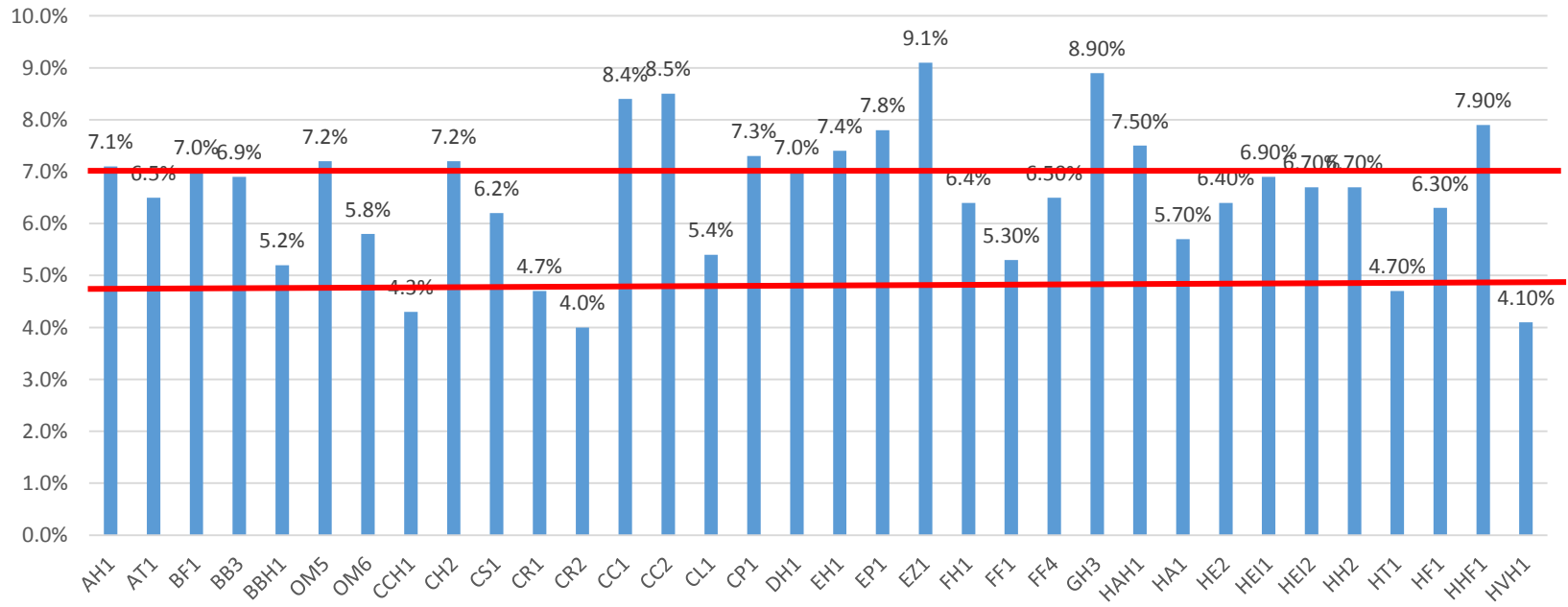


Cascade Alpha Acids



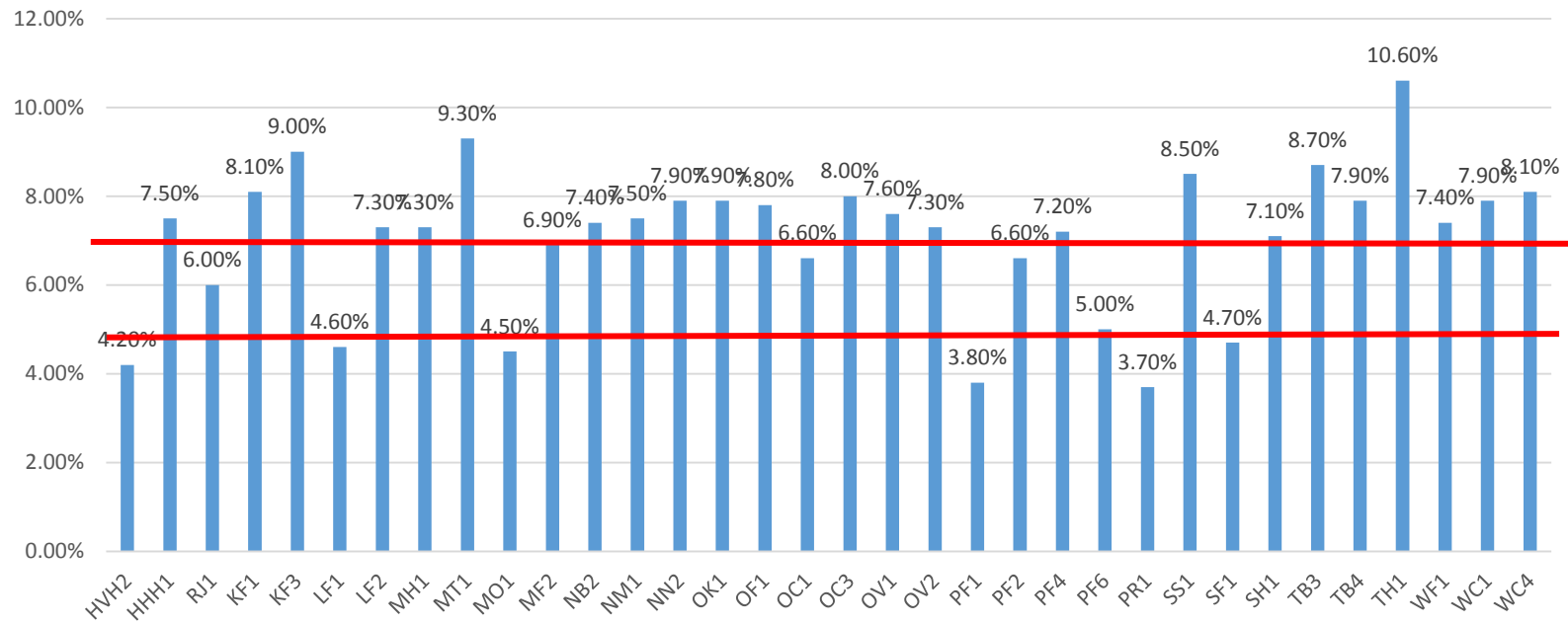
Cascade Beta Acids

Normal Range
4.8 - 7.0

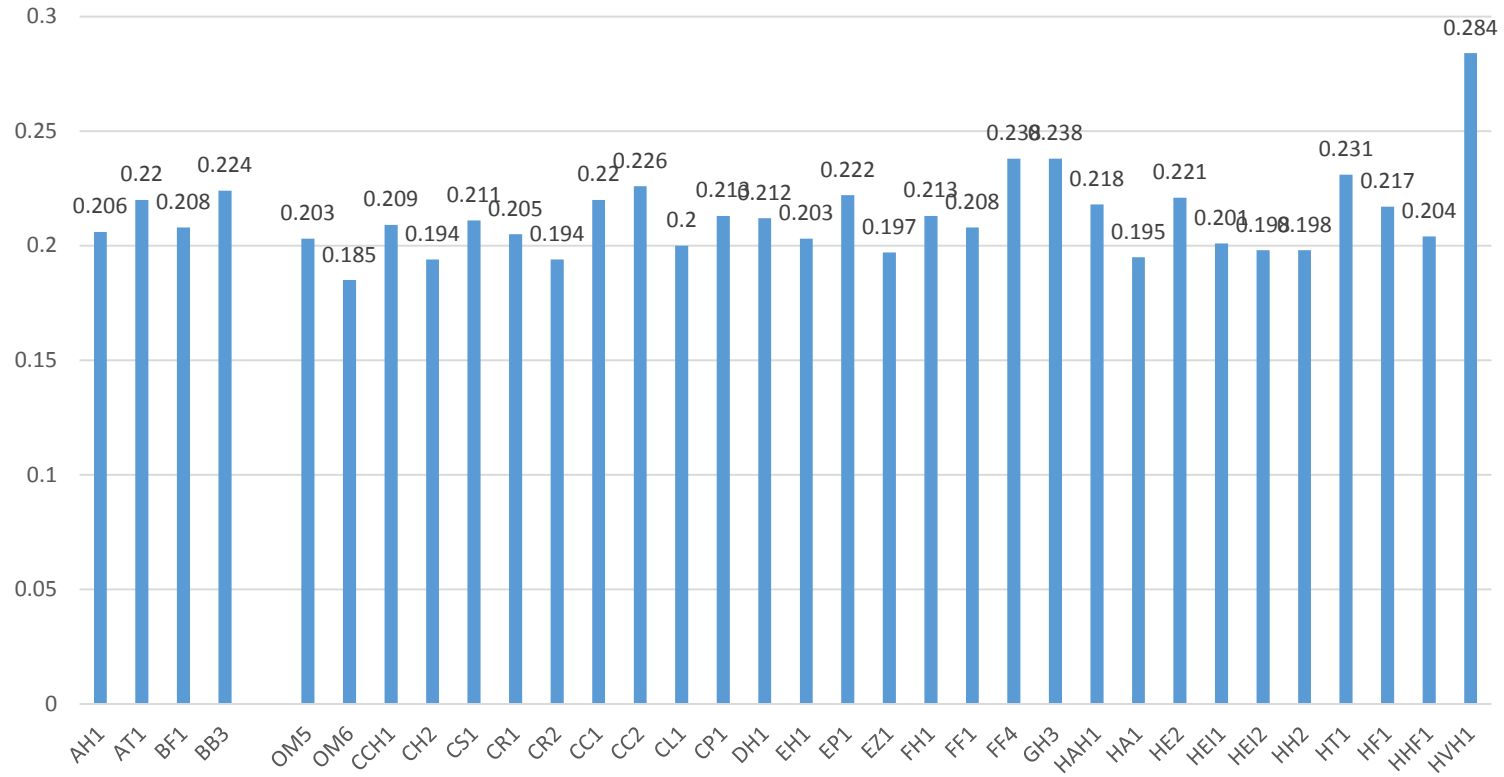


Cascade Beta Acids

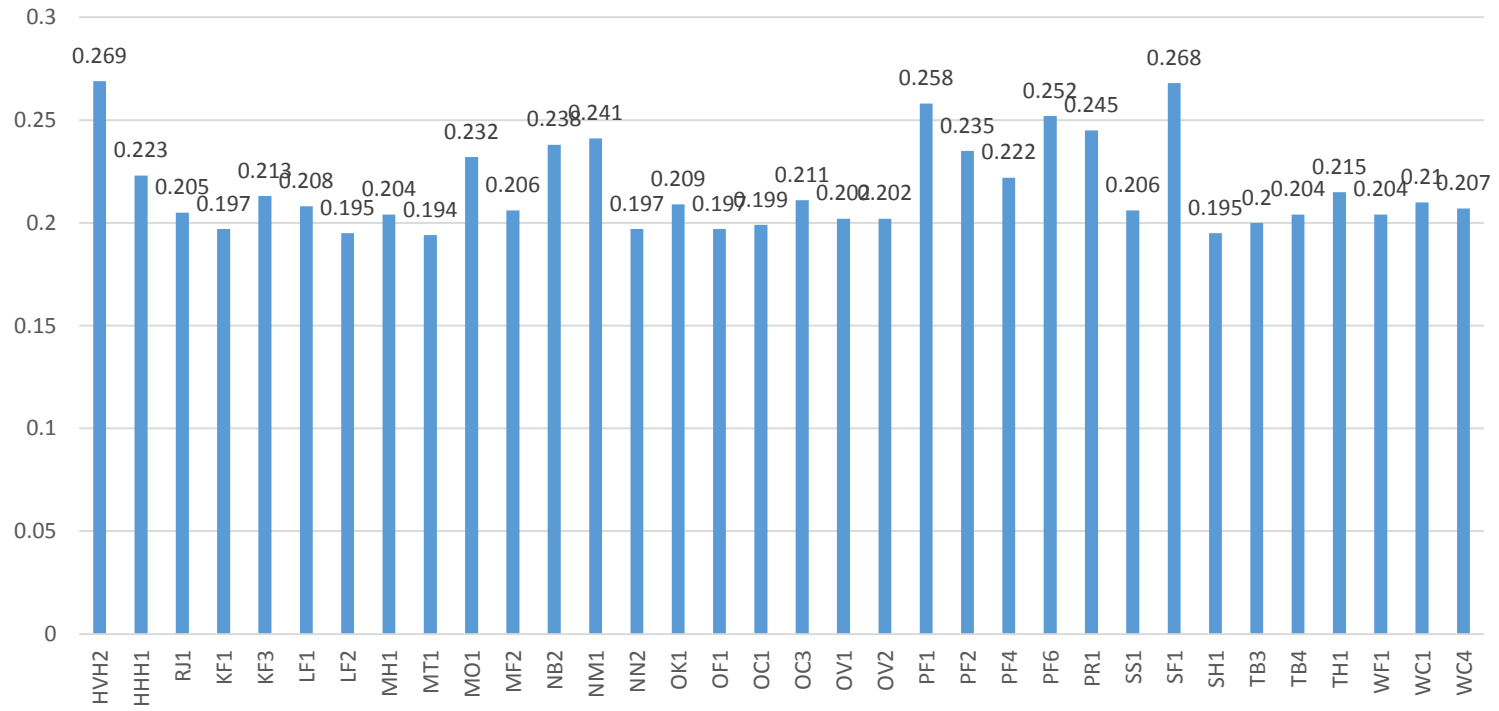
Normal Range
4.8 - 7.0



Cascade H.S.I.

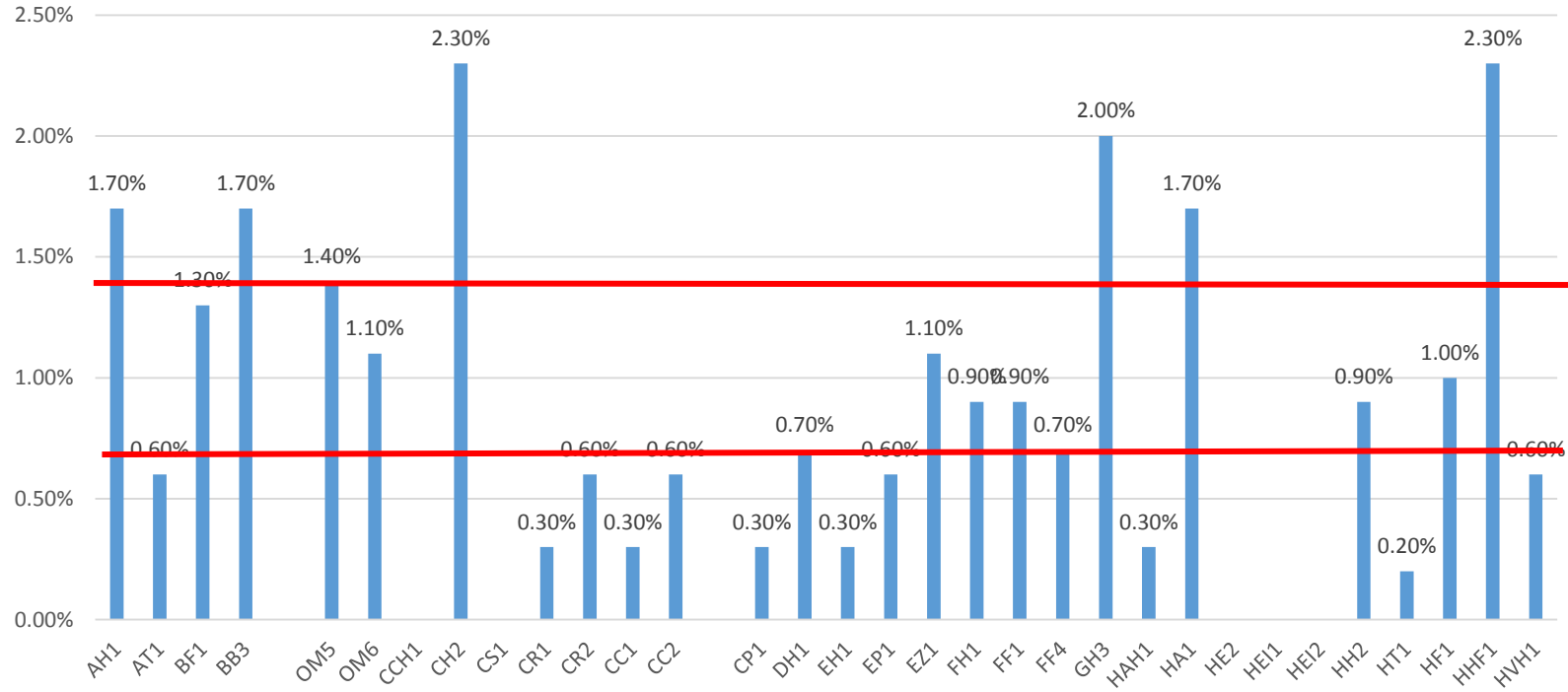


Cascade H.S.I.



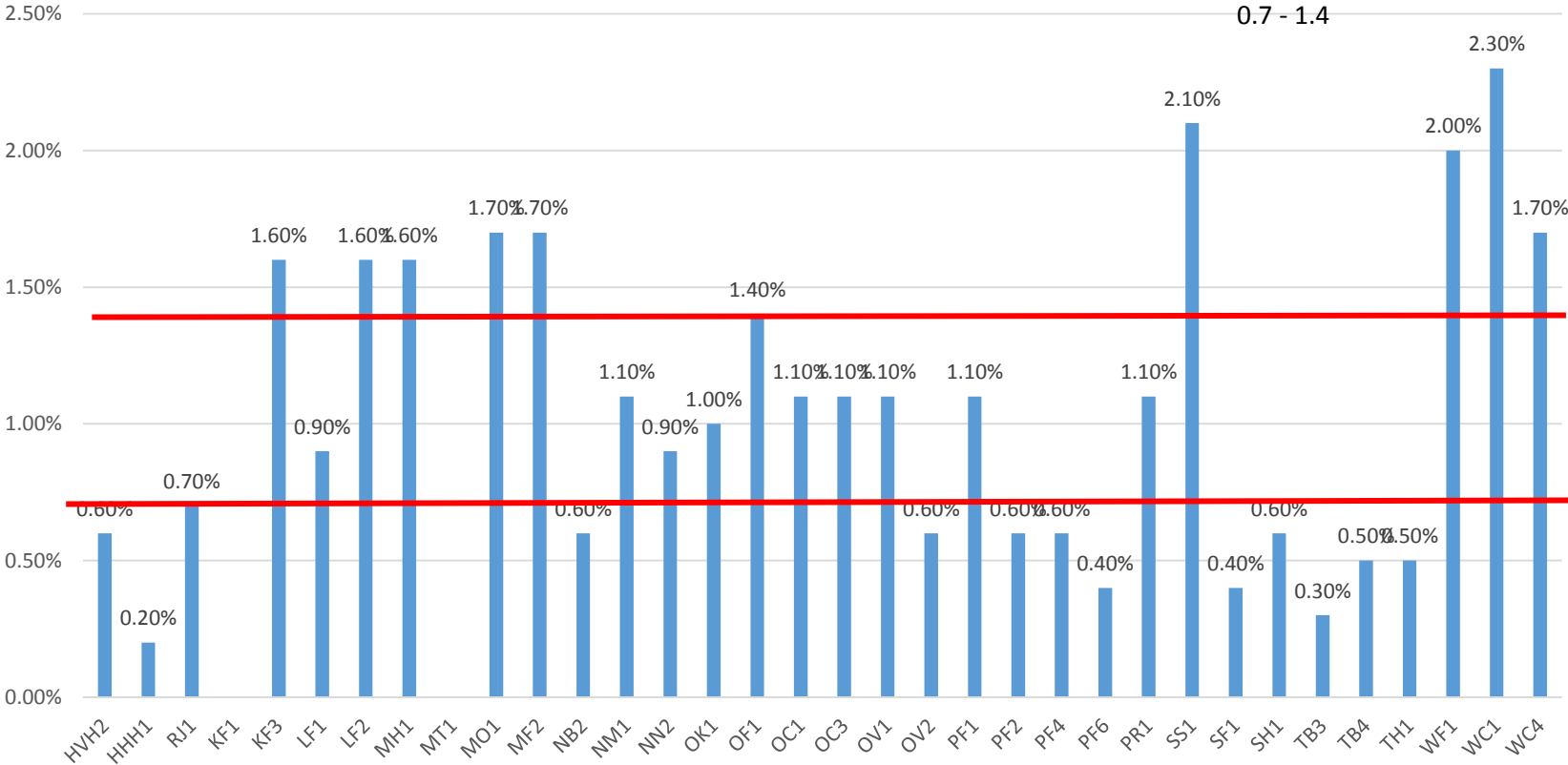
Cascade Oil% v/w

Normal Range
0.7 - 1.4



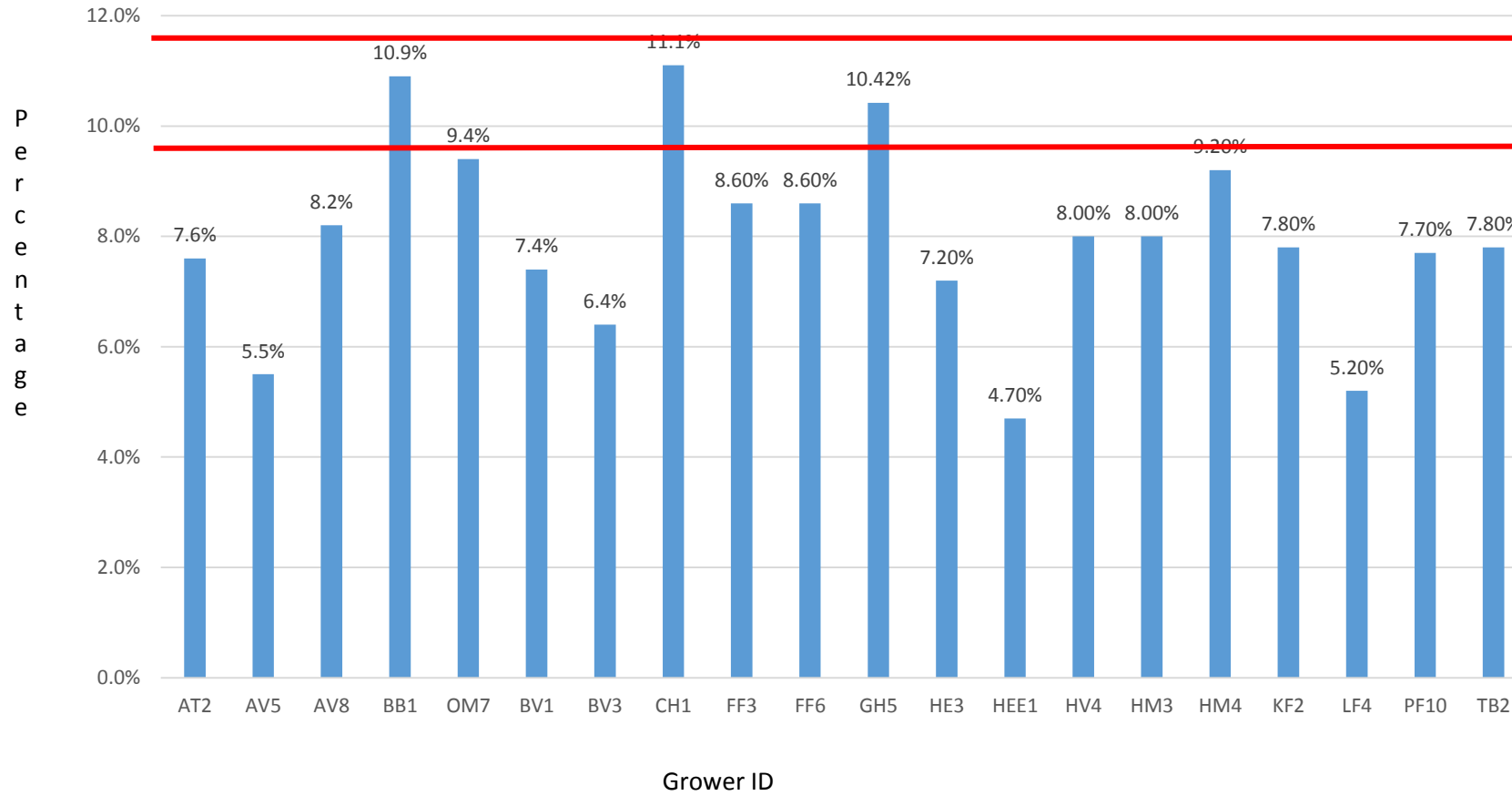
Cascade Oil%v/w

Normal Range
0.7 - 1.4

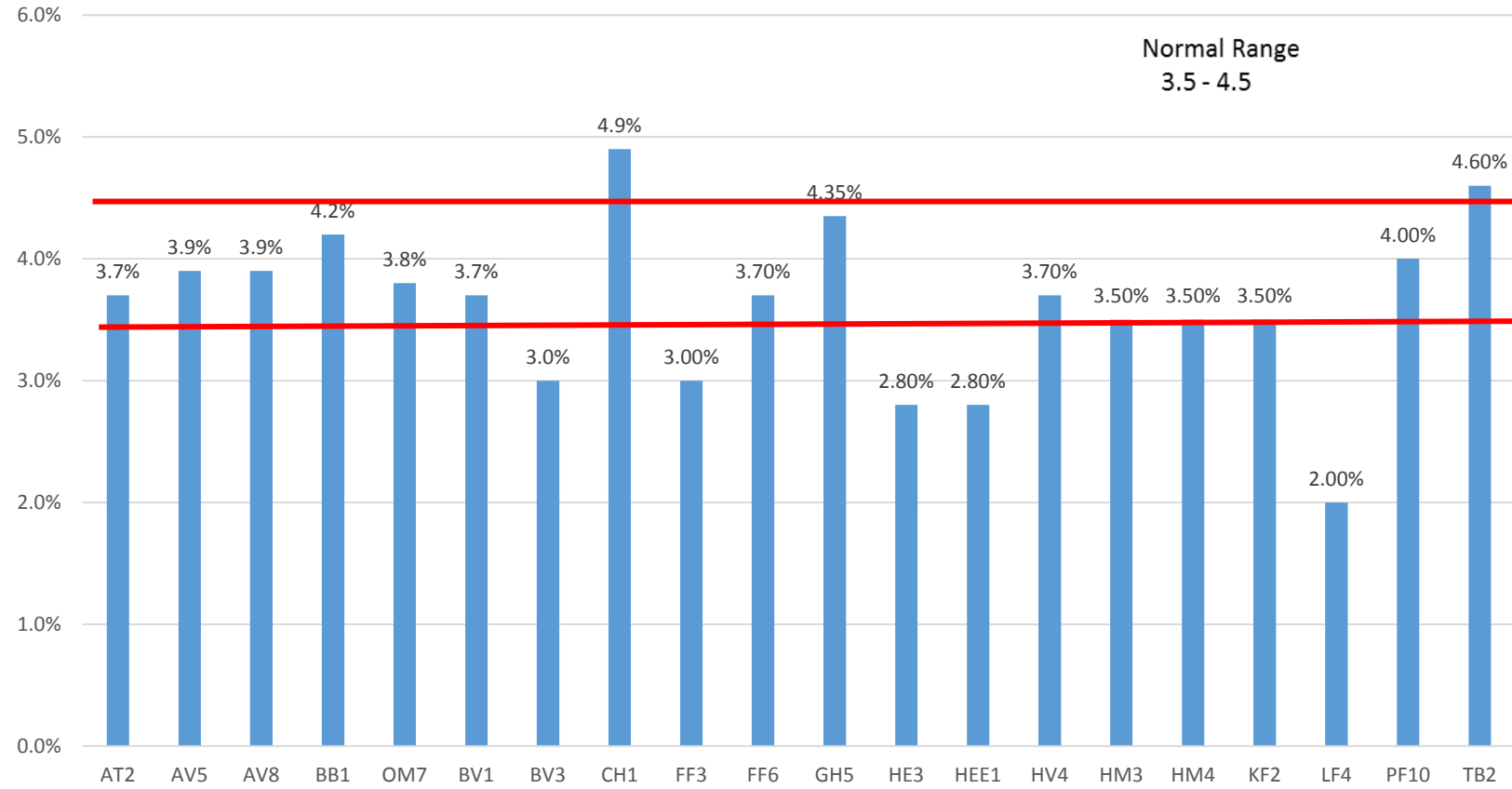


Centennial Alpha Acids

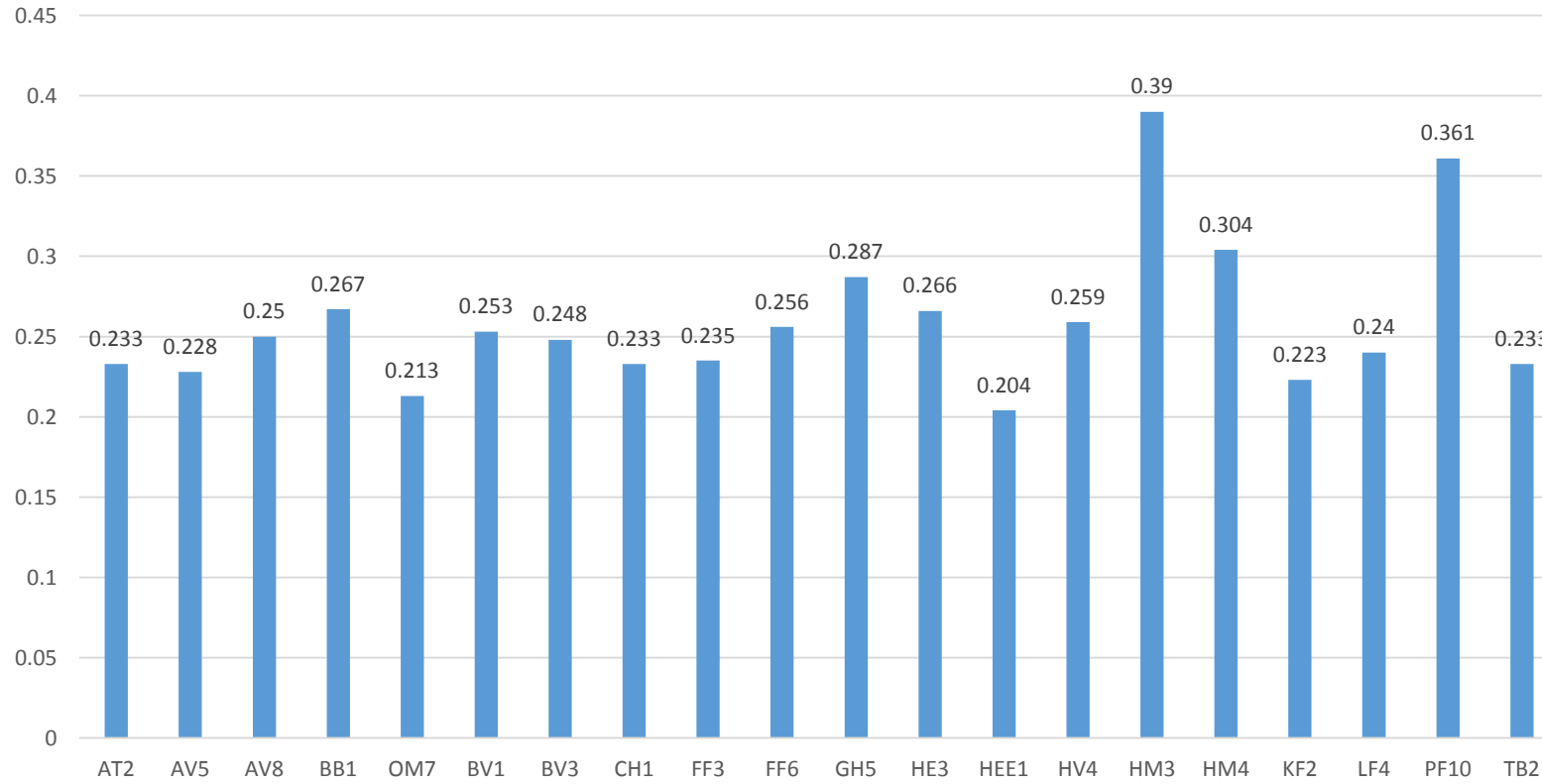
Normal Range
9.5 - 11.5



Centennial Beta Acids

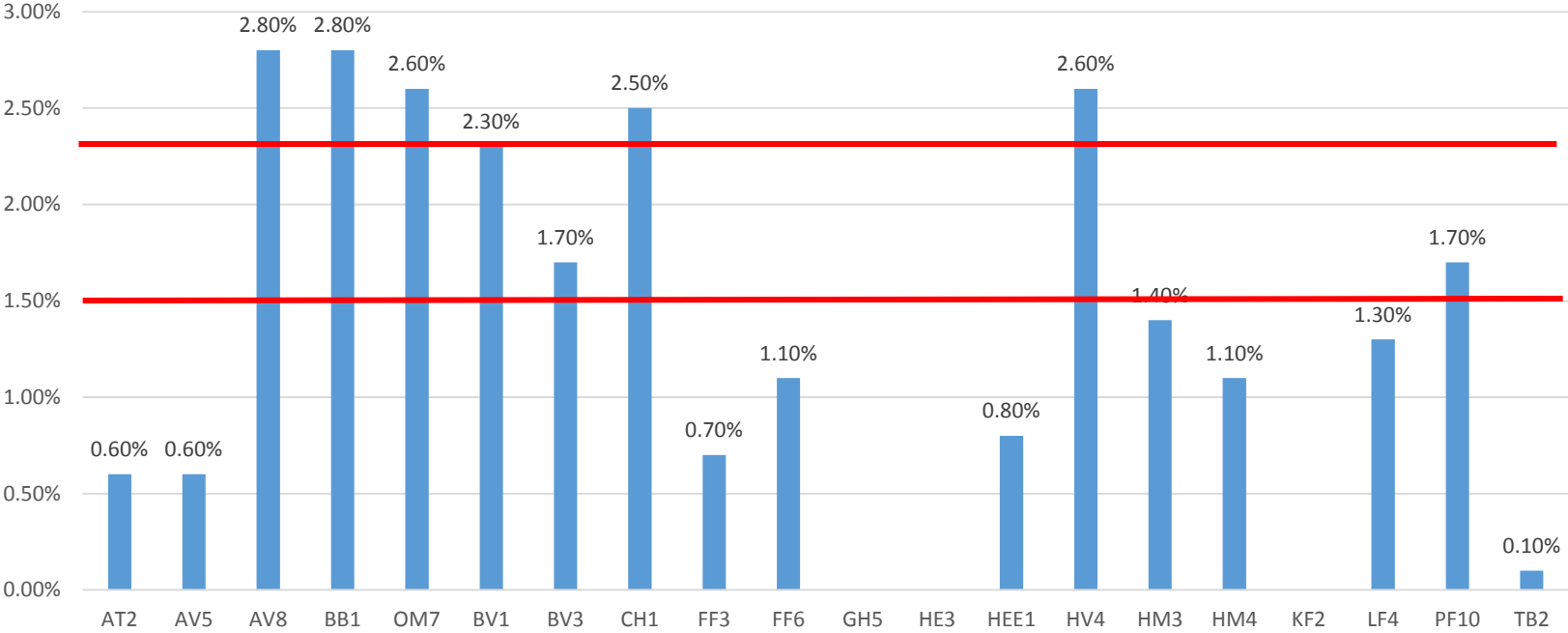


Centennial H.S.I.



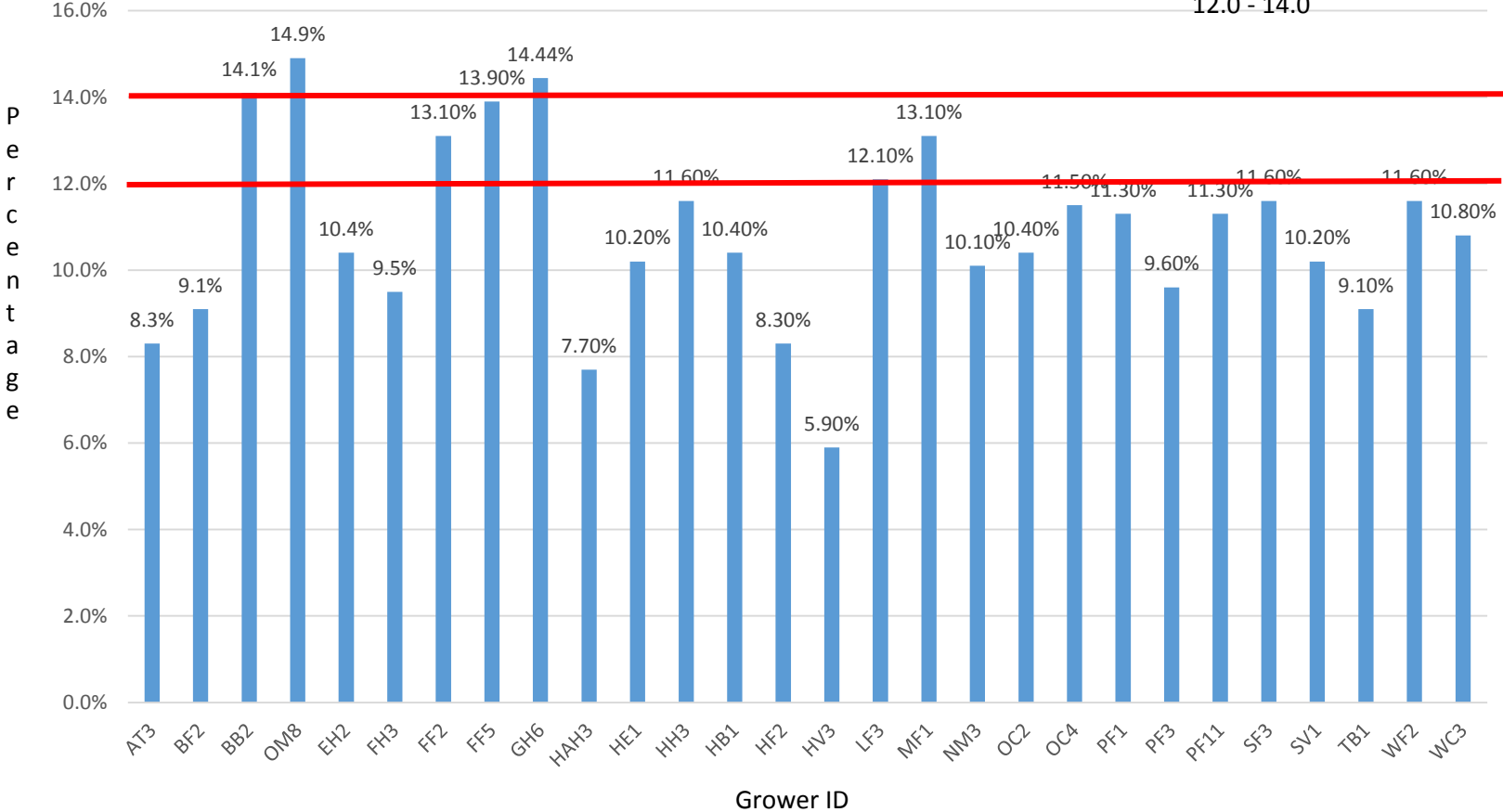
Centennial Oil%v/w

Normal Range
1.5 - 2.3



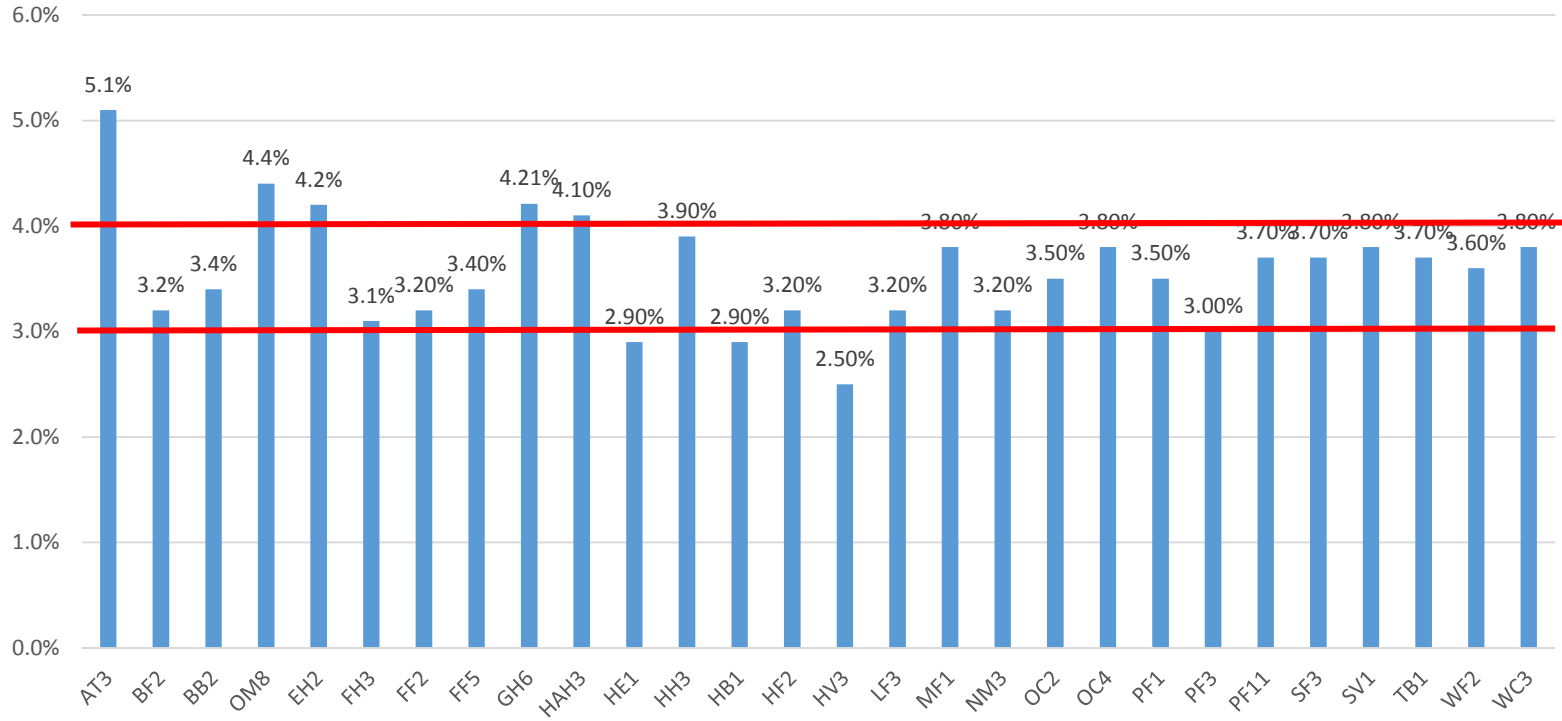
Chinook Alpha Acids

Normal Range
12.0 - 14.0

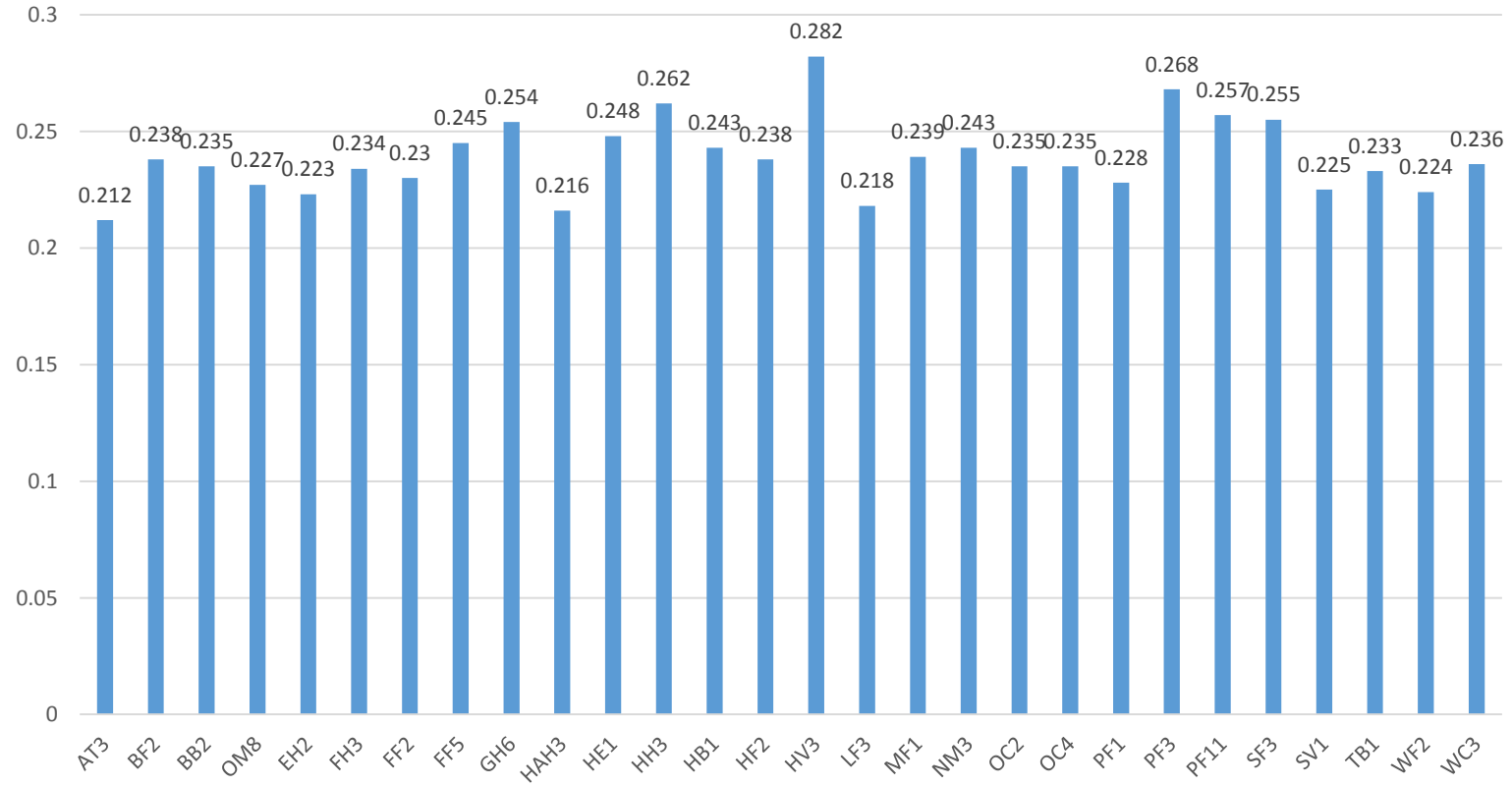


Chinook Beta Acids

Normal Range
3.0 - 4.0

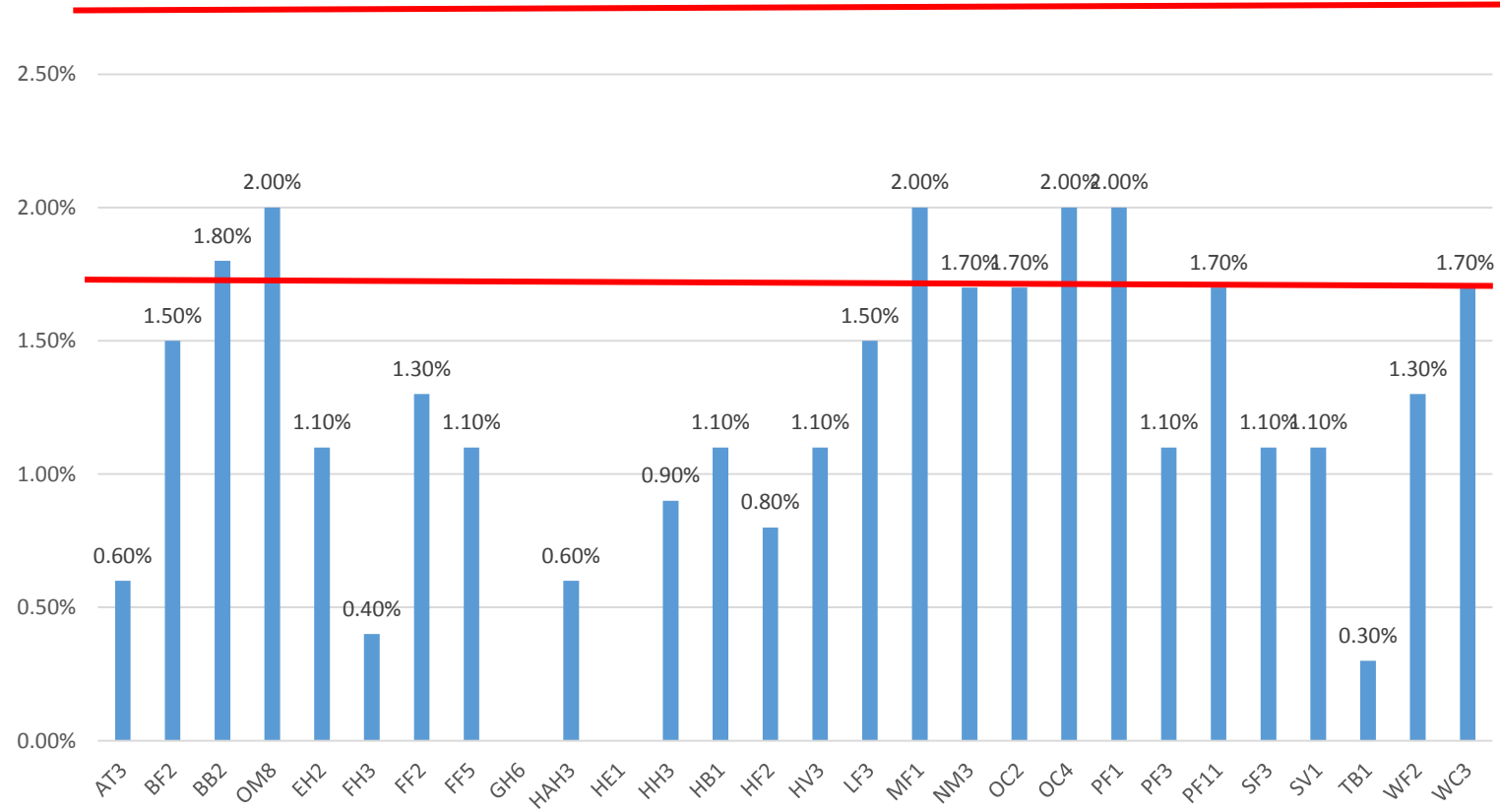


Chinook H.S.I.



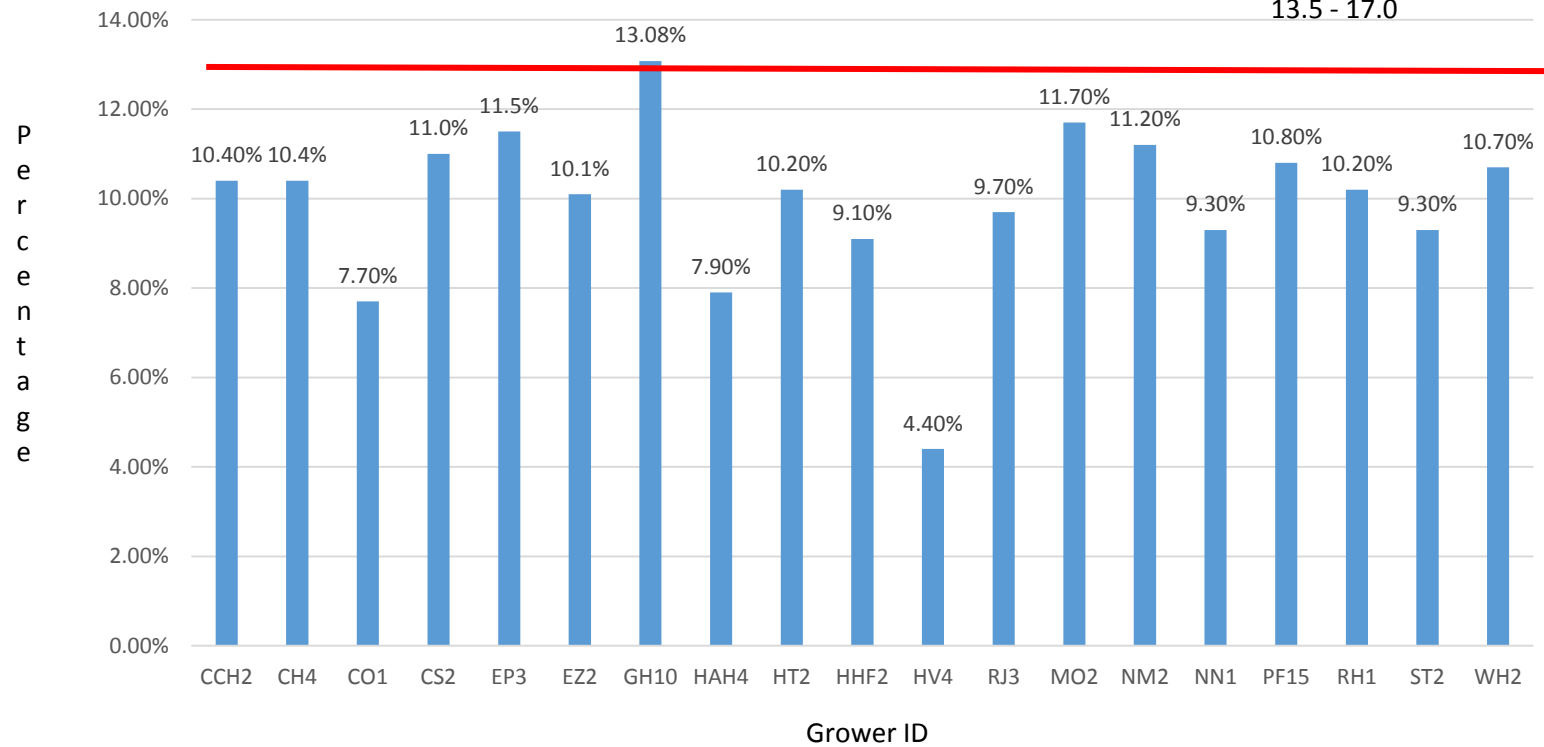
Chinook Oil%v/w

Normal Range
1.7 - 2.7

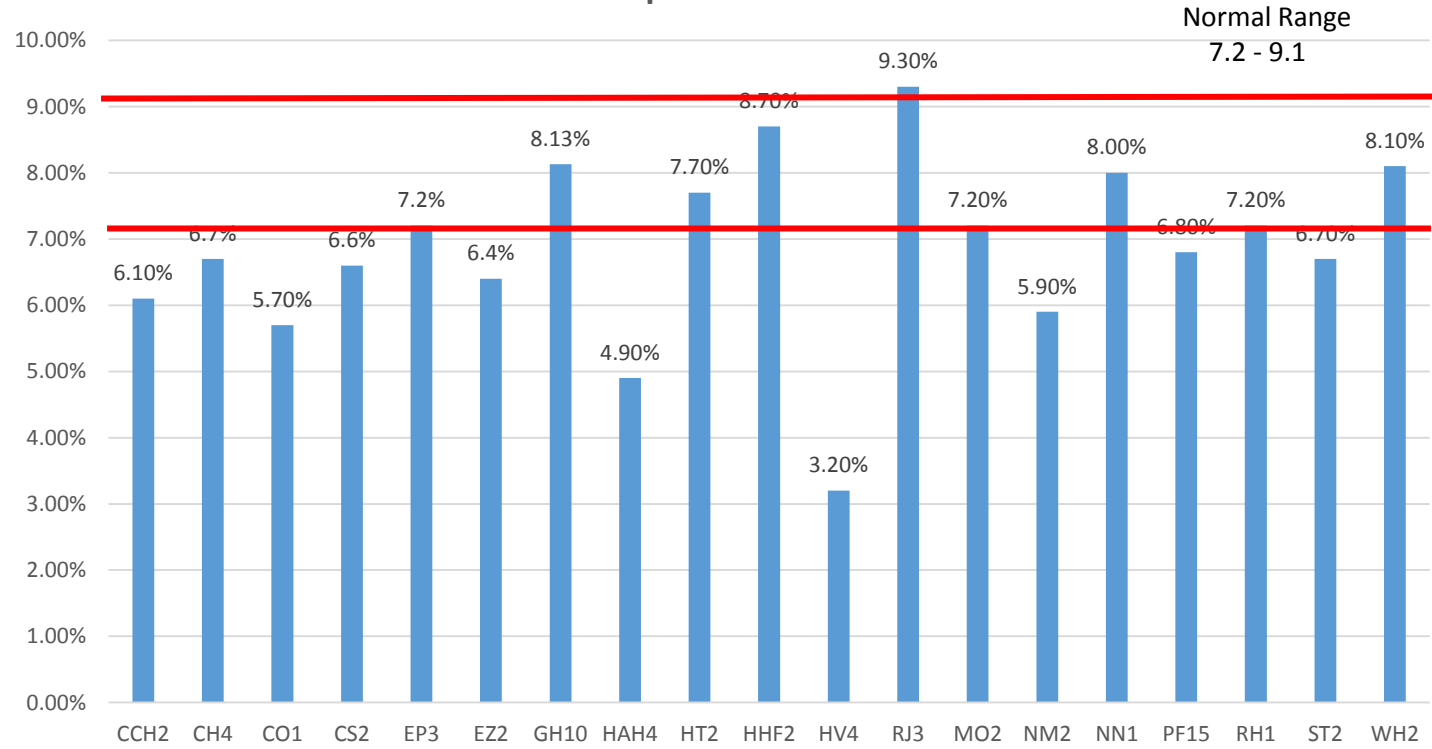


Newport Alpha Acids

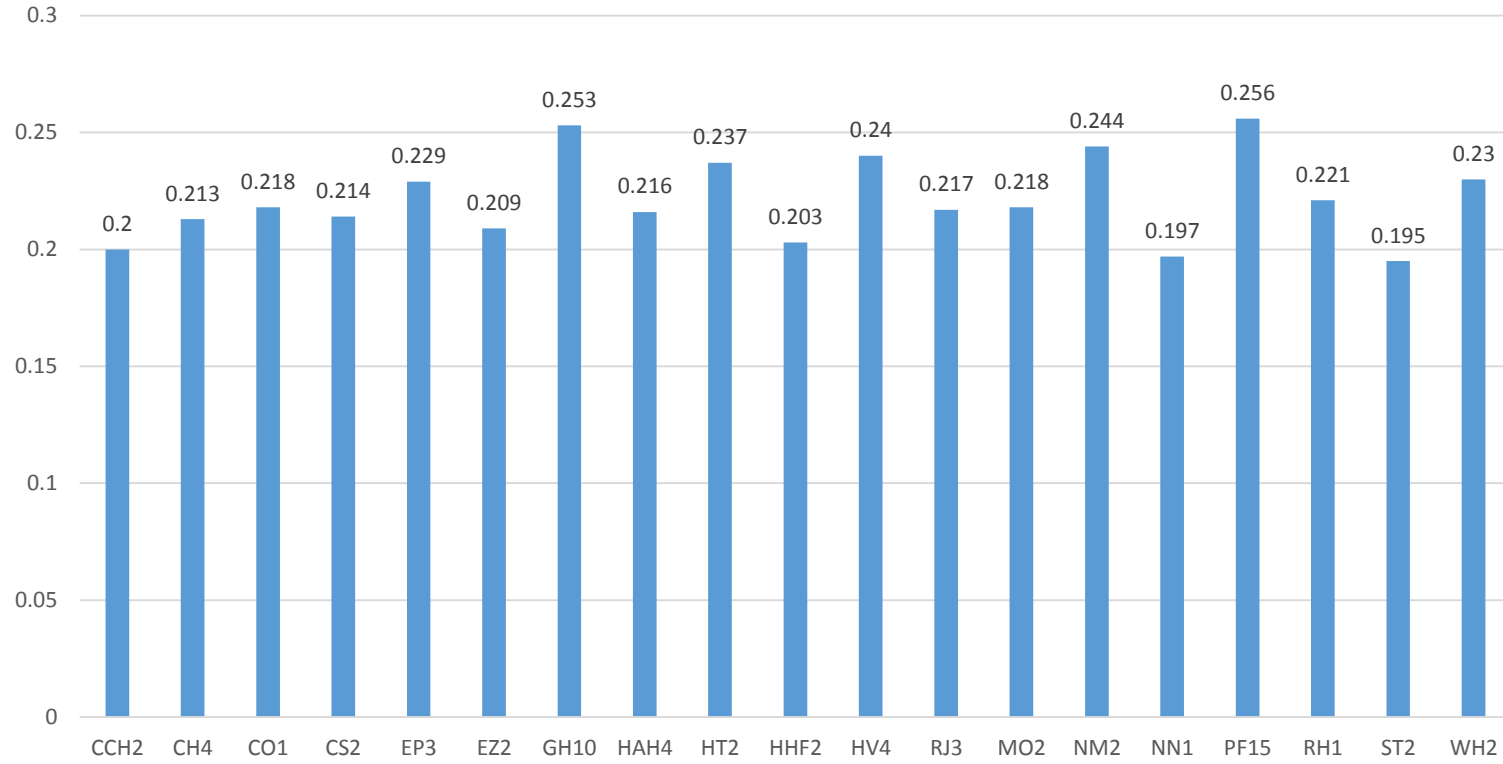
Normal Range
13.5 - 17.0



Newport Beta Acids

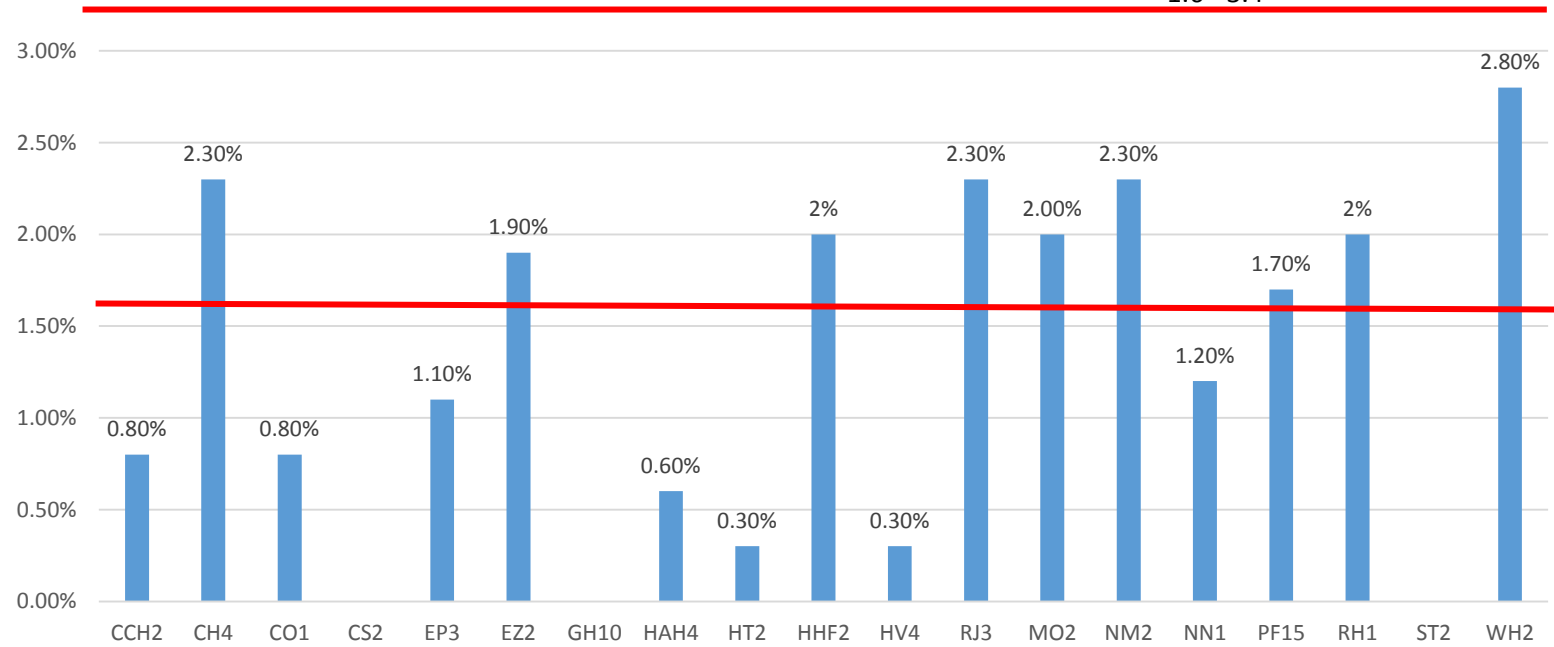


Newport H.S.I.

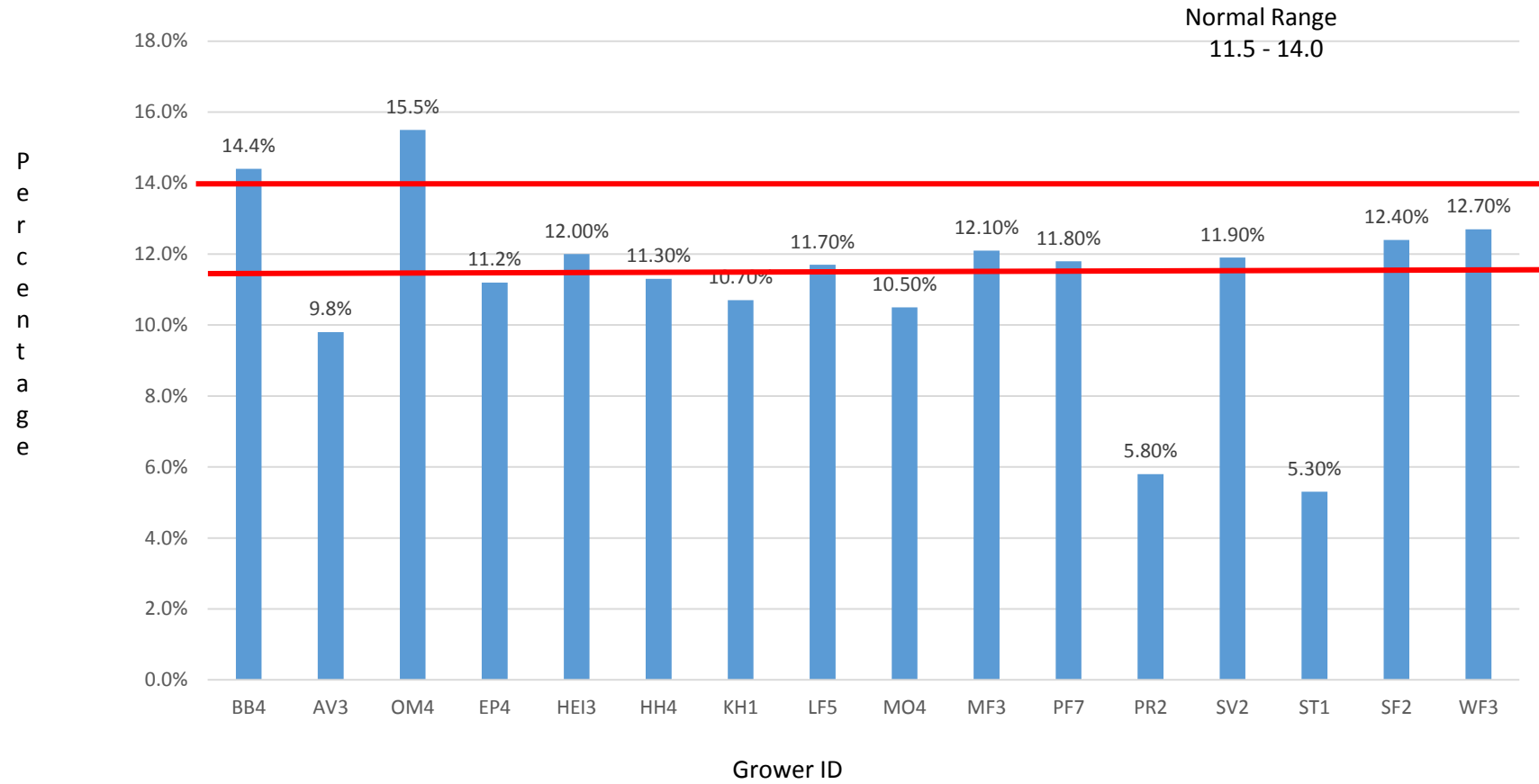


Newport Oil%v/w

Normal Range
1.6 - 3.4

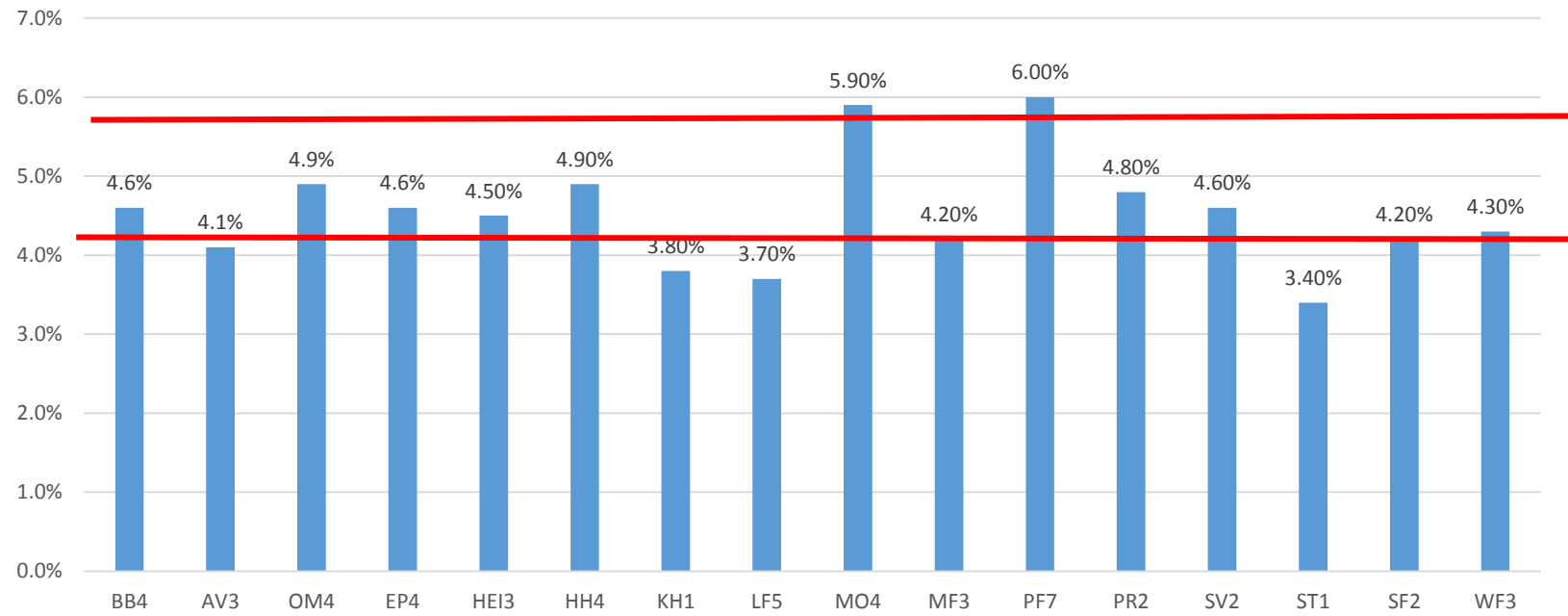


Nugget Alpha Acids

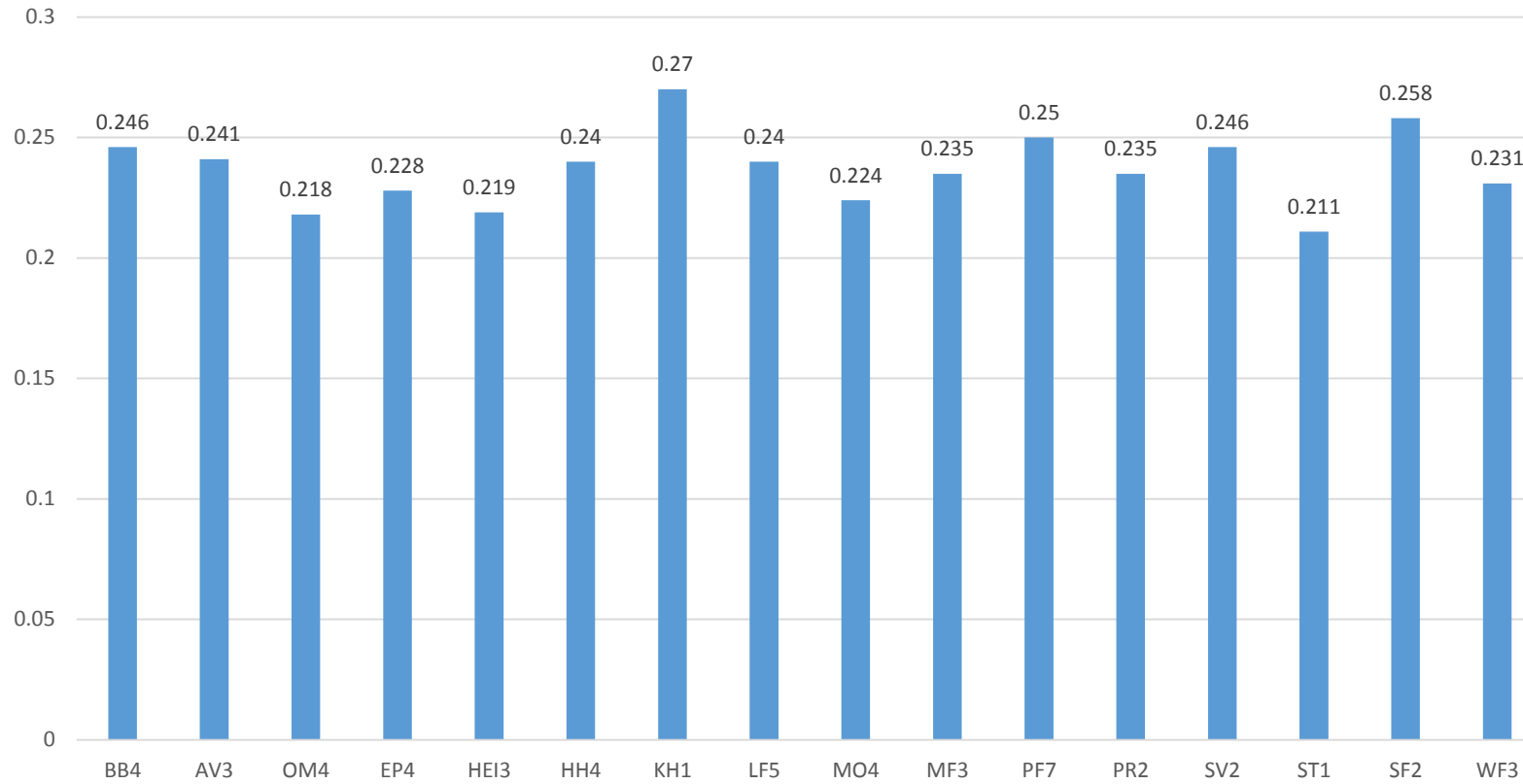


Nugget Beta Acids

Normal Range
4.2 - 5.8

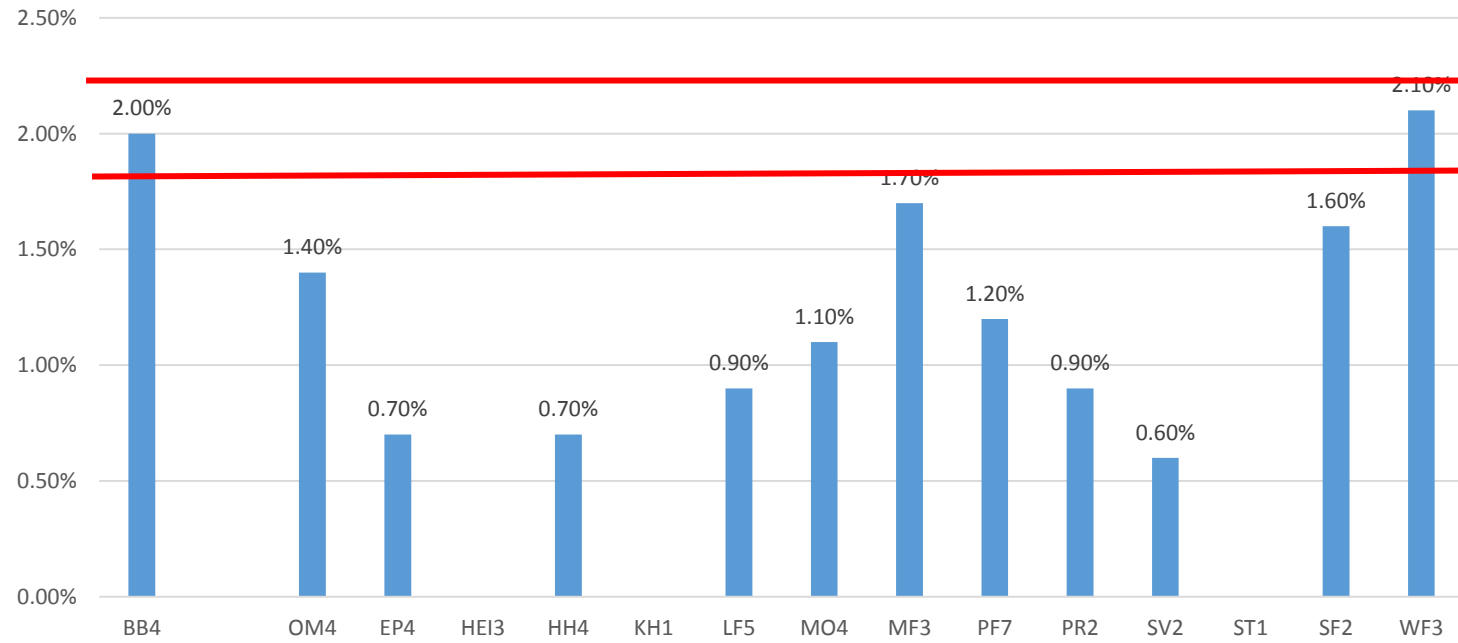


Nugget H.S.I.



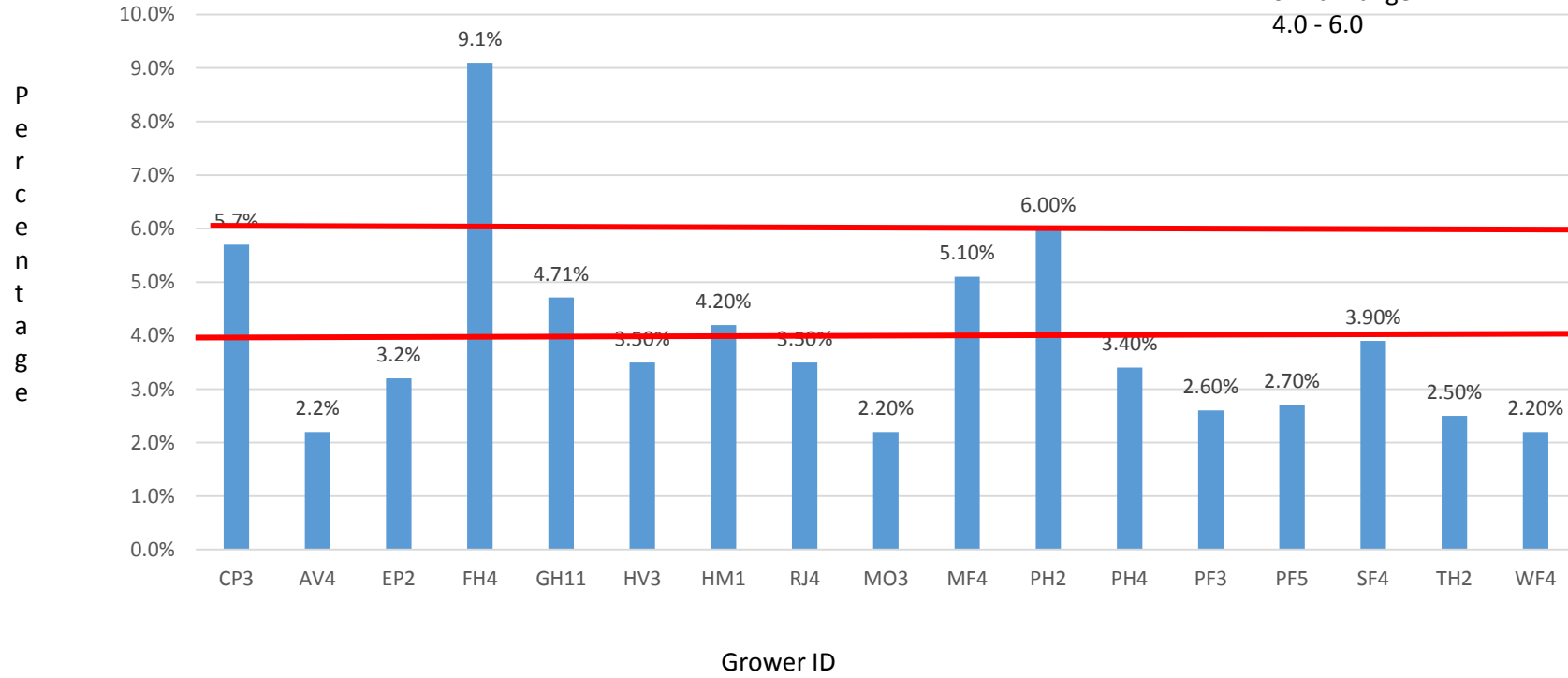
Nugget Oil%v/w

Normal Range
1.8 - 2.2

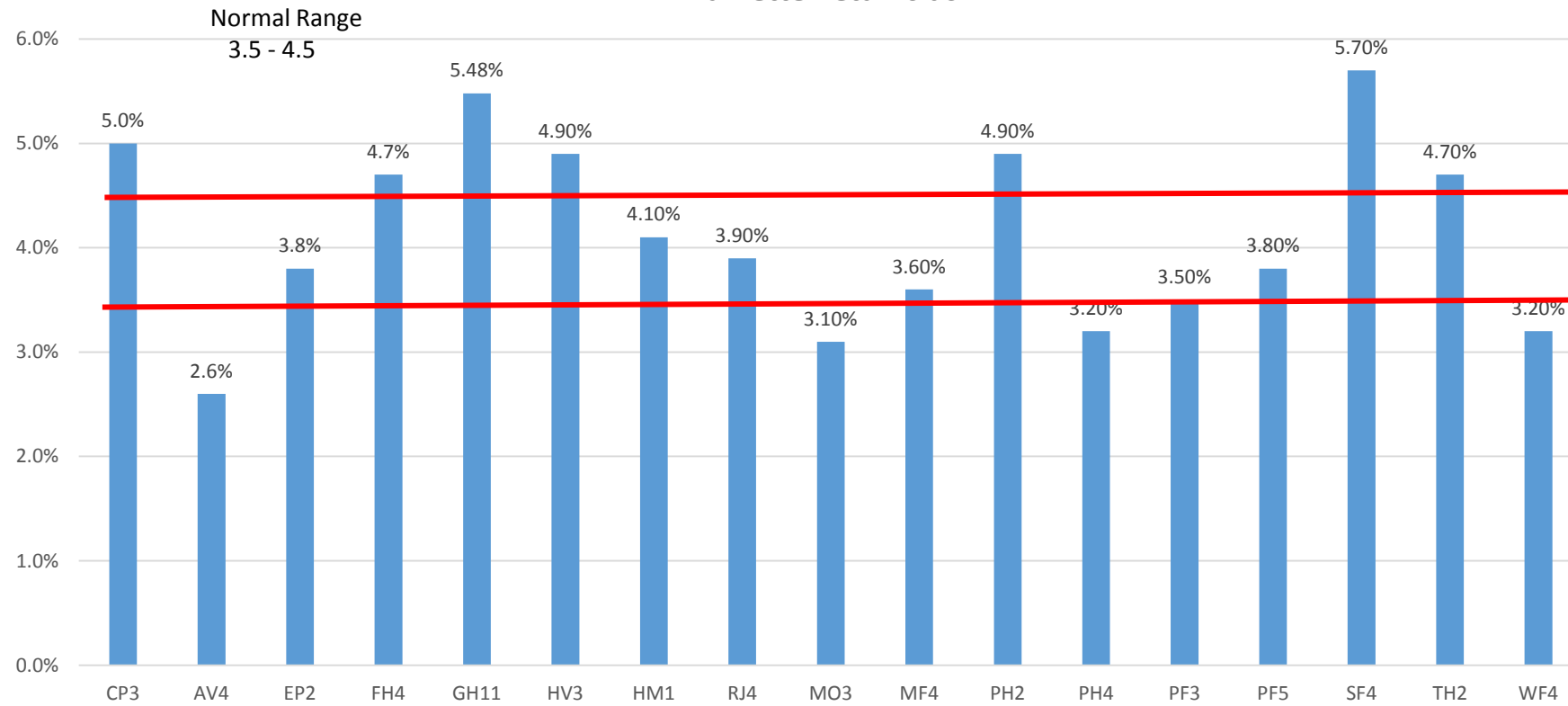


Willamette Alpha Acids

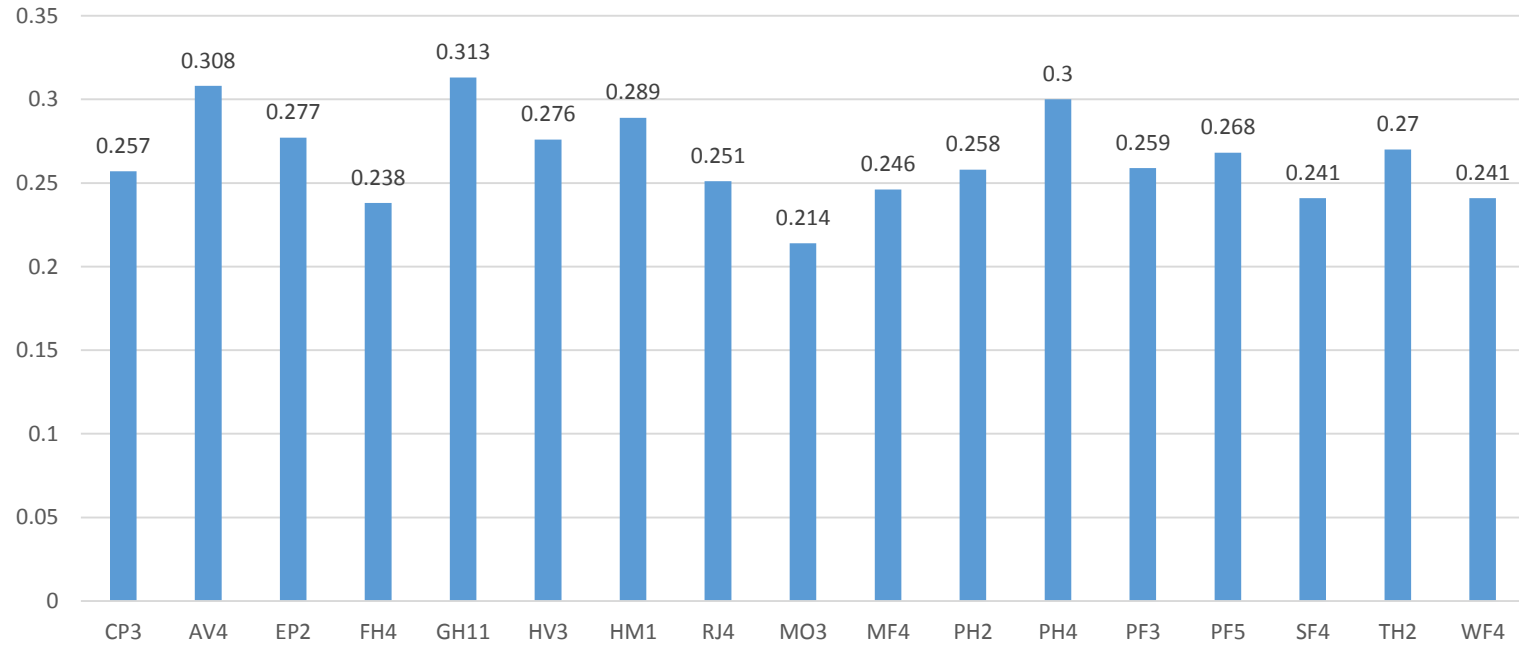
Normal Range
4.0 - 6.0



Willamette Beta Acids



Willamette H.S.I.



Willamette Oil%v/w

Normal Range
1.0 - 1.5

