

Master Brewers Safety Toolbox Talk



Safe Grain Handling and Transfer

Rob Williams, MBAA Brewery Safety Committee

When handling grain through hose or piping, there are a few things to consider to ensure safe transfer or even a safe atmosphere.

An auger-style system uses PVC or metal piping. Fortunately, the grain and dust are confined. It's the dust that is exposed to the surrounding atmosphere that can be an issue. Making sure the system is grounded as much as possible will help close the gaps on potential dust ignition.



System Grounding

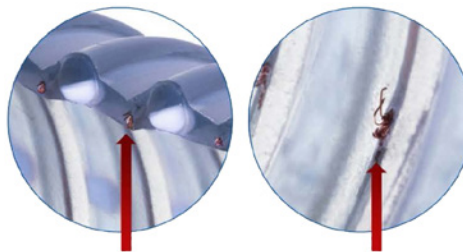
If you are using a hose for bulk-unloading grain transfer or hopper connections, it is very important that the hose is grounded to the fittings. Most ducting and heavier duty dry handling hoses will have a static wire or reinforcing wire that will need to be turned into the fitting to create continuity from one end of the hose to the other. There also are ducting hoses that have static-dissipative characteristics without a wire reinforcement.



Bulk Unloading



Hopper Transfer



Wear on Inner Liner of Hose

Be mindful that grain is abrasive and has the potential to wear the inner liner of the hose over time, exposing the wire and breaking the continuity loop. Periodic checks for continuity are recommended.



Grounding Wire Jumper

If using metal pipe with site glass to view flow movement, make sure that additional grounding is in place to continue the loop in your system.

If you have any questions or comments regarding this Toolbox Talk, please contact a member of the Brewery Safety Committee.